

BF-430/431/450/450M Quick Setup Guide

一、 Power and Environment :

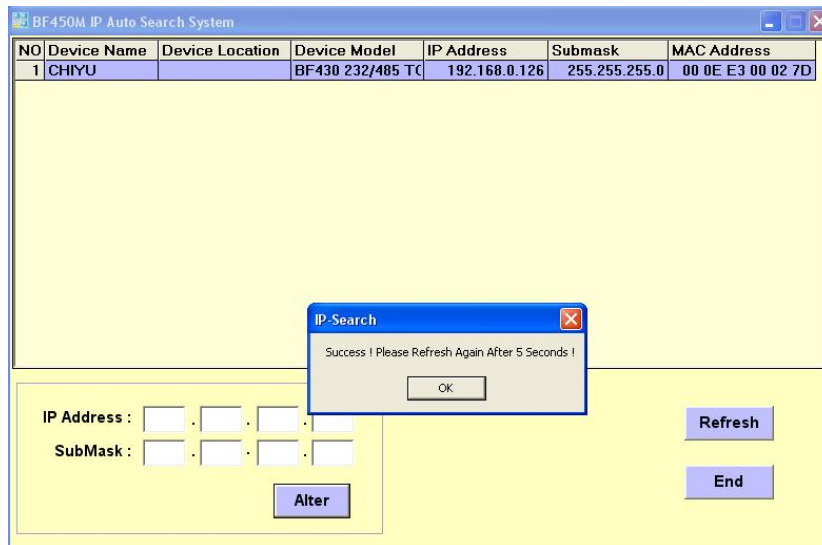
	BF-430	BF-431	BF-450	BF-450M
Power	DC 9 ~ 30V, 300mA			DC 5V, 200mA
Operation Temperature	0 ~ 55°C			
Operation Humidity	5 ~ 95%RH			
Storage Temperature	- 20 ~ 85°C			

二、 Connect Way :

1. Connect with computer directly : Please connect with computer via “Cross Over” line.
2. Connect by HUB : Make computer and Converter connecting to HUB separately via line.

三、 Converter Quick Setup

1. Setup IP Search software and execute. You can find the setup program in CD-Rom attached in Converter.
2. Press “Refresh” to search the Converter. If you can’t find the Converter connected, please check connection is correct or not and the computer installs TCP/IP protocol or not. (Please refer BF-450(M) / BF-430 RS232/RS485 to TCP/IP Converter Module Quick start guide).
3. Move the mouse icon on Converter menu and click left button.
4. Key-in applicable IP address , Subnet Mask and press “Alert” to modify.
5. Close the message window and press “Refresh” to upgrade data. Move the mouse icon on Converter menu and double click left button then you will go into the Converter Web configuration window. 【Picture 2】、【Picture 3】。

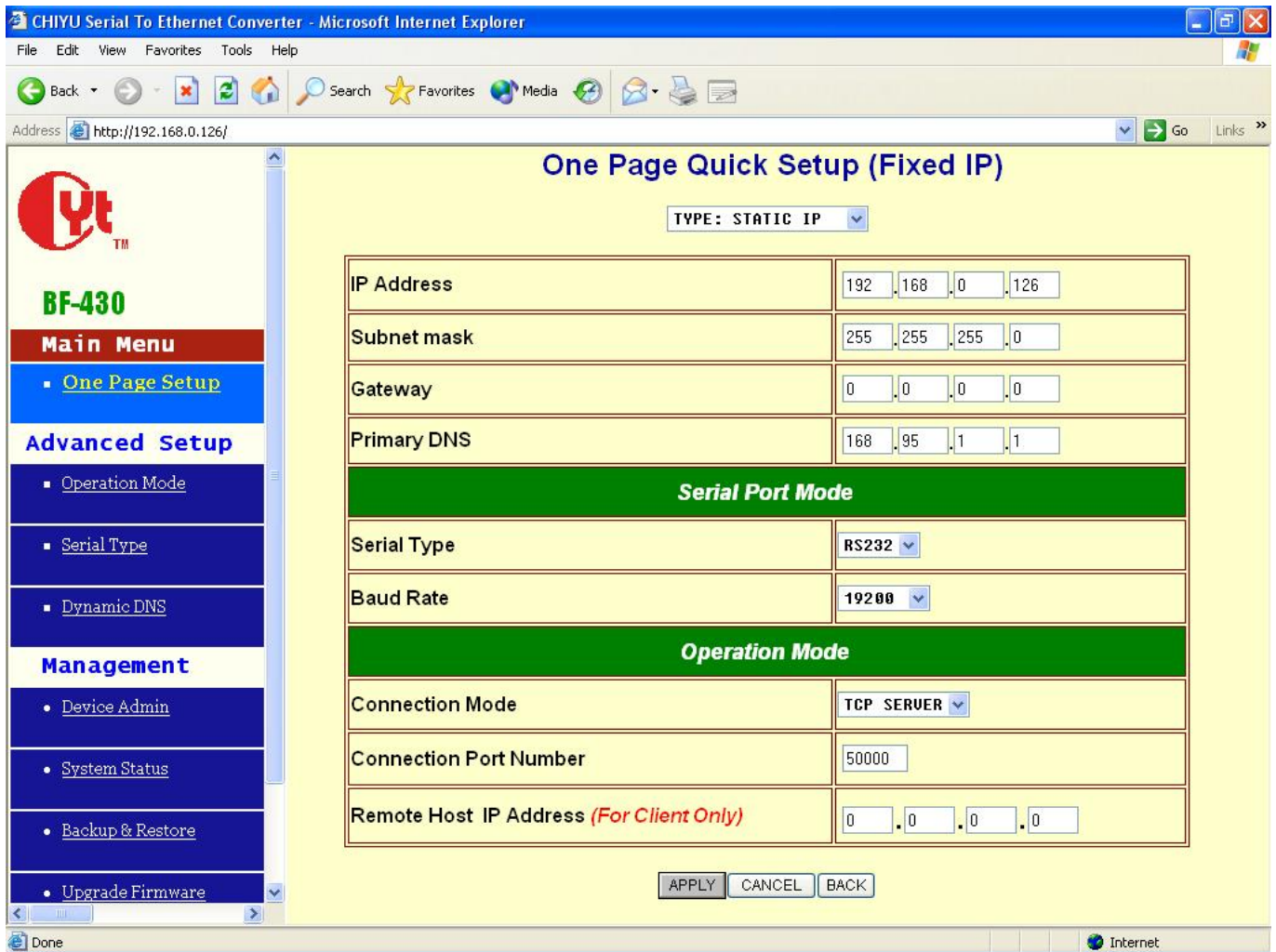


【Picture 1】



User Name : admin
Password : admin

【Picture 2】



【Picture 3】

Web configuration field explain.

- A. Type : Setup obtaining IP way of Converter. There are 3 choices.
 - STATIC IP : Assign fix IP to Converter by User.
 - DHCP CLIENT : The Converter obtains IP from the DHCP server of domain. You can execute IP Search to know IP Address of Converter obtained.
 - PPPoE : The Converter obtains IP from ISP via xDSL modem. You can execute IP Search to know IP Address of Converter obtained or enable DDNS service to access equipment without fix IP address.
- B. IP : Setup Converter IP 、 Subnet Mask 、 Gateway and Primary DNS. If you have setup IP address and Subnet Mask from IP Search. Then you just need to assign Gateway according the domain environment. (You need to assign if the domain of Equipment and Converter are different.)
- C. Serial Port Mode : Setup the serial type and baud rate of Converter.
 - Serial Type : Choose the serial type. RS232 / RS485 / RS422 depends on Converter type.
 - Baud Rate : Setup the baud rate of serial port depends on connected equipment. If the baud rate of connect equipment is 19200, please choose 19200.
- D. Operation Mode : Setup the operation mode of Converter
 - Connect Mode : Choose TCP SERVER / TCP CLIENT / UDP SERVER / UDP CLIENT depend on operation environment.
 - Connect Port Number : Assign TCP/IP communication port. The value must same as your software.
 - Remote Host IP Address(For Client Only) : Assign the remote server. You need to assign when Converter is used as CLIENT.